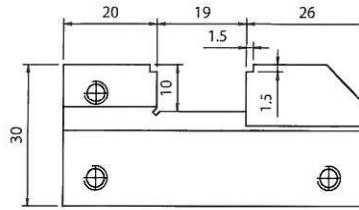
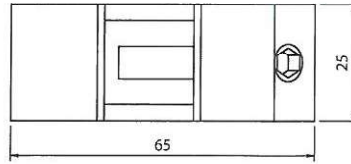
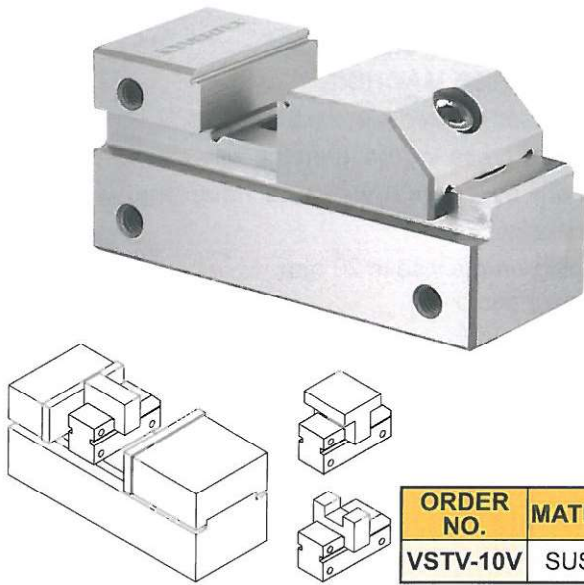




# Tool Maker Vise (STAINLESS)



**VERTEX**  
MINI TYPE FOR EDM



Tool makers vise of mini type which can be put in a bigger vise to process the small and precise workpiece. Also it can be used in an E.D.M. machine and grinding machine.  
Squareness and parallelism: within  $\pm 0.003 / 100$  mm  
※ Not 100% magnetic proof

ORDER NO.	MATERIAL	LENGTH	WIDTH	JAW OPENING	JAW HEIGHT	HARDEN	WEIGHT (kgs)	CODE NO.
VSTV-10V	SUS 440	65	25	19	10	HRC 56°-58°	0.3	2008-070

TOOL MAKER VISE



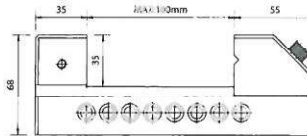
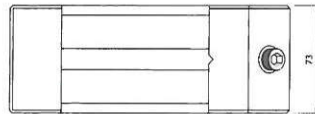
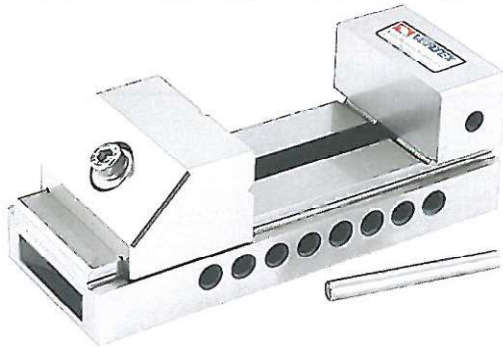
# Tool Maker Vise (STAINLESS)

ORDER NO.	WEIGHT (kgs)	CODE NO.
VBST-30	4.5	2008-075

Material: SUS 440  
Hardness: HRC 58°~60°  
Squareness: Within 0.005 / 100 mm  
※ Not 100% magnetic proof

MINI TYPE FOR EDM

Unit:mm

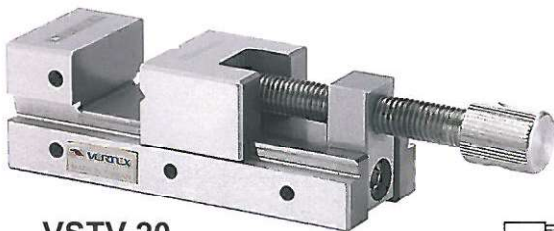


TOLERANCE	
A	$\pm 0.004$ mm
B	$\pm 0.005$ mm
C	$\pm 0.005$ mm
D	$\pm 0.005$ mm
E	$\pm 0.005$ mm
F	$\pm 0.005$ mm
G	$\pm 0.005$ mm

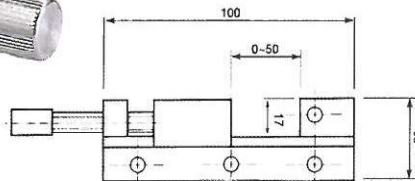


# Tool Maker Vise (STAINLESS)

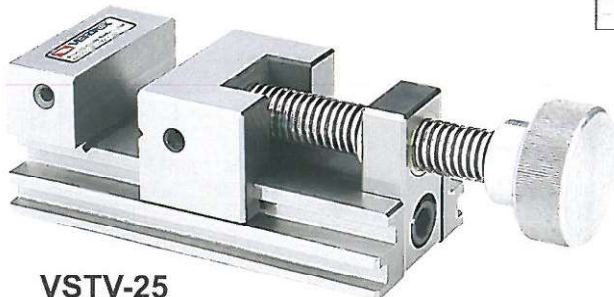
FOR EDM



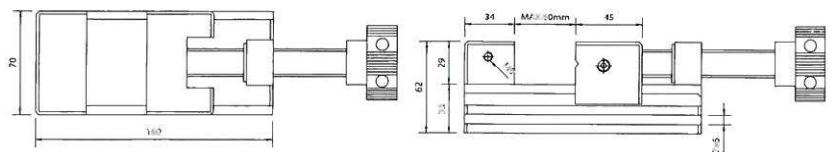
VSTV-20



- Material: SUS 440
  - Hardness: HRC 56°
  - Squareness: Within 0.005 / 100 mm
  - It was made by tool steel of stainless steel system and was precision ground after hardened by heat treatment. So, it will not be rusted even permeation.
  - The vise can clamp workpiece by moveable Jaw without lifting. It is easier and convenient for processing small workpieces.
- ※ Not 100% magnetic proof



VSTV-25



ORDER NO.	MATERIAL	LENGTH	HEIGHT	JAW OPENING	JAW WIDTH	JAW HEIGHT	HARDEN	WEIGHT (kgs)	CODE NO.
VSTV-20	SUS440	100	35	50	35	17	HRC56°	1.2	2008-079
VSTV-25		160	62	80	70	29		4.4	2008-080