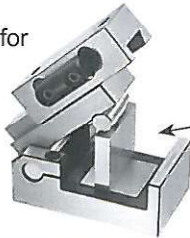


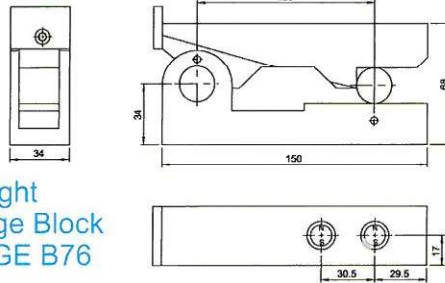
There is magnet in the bottom which can be run on any kind of machine for testing angle use.

The thread can for stopper screw



Height Gage Block PAGE B76

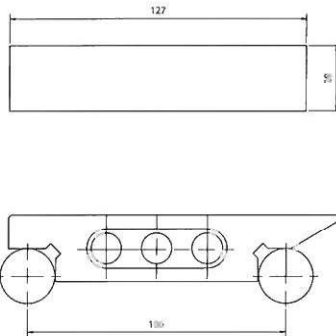
● Example



Unit:mm

ORDER NO.	SQUARNESS /100mm	ACCURACY	PARALLELISM	HARDENESS	MATERIAL	N.W. (kgs)	CODE NO.
V-S50M	0.005mm	±0.002	0.002mm/100mm	HRC50°	SK-3	0.34	2004-001
V-S100M	0.005mm	±0.002	0.002mm/100mm	HRC50°	SK-3	2.06	2004-002

## Sine Bar

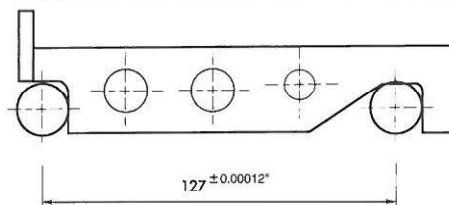


Unit:mm

ORDER NO.	LENGTH	WIDTH	HEIGHT	CENTER DISTANCE	PARALLEL	HARDEN	BLOCKS DIA.	MATERIAL	N.W. (kgs)	CODE NO.
VS-100	127	28	35	0.005	0.005/100mm	HRC50°	Ø20mm	SK-3	0.76	2004-010

## Sine Bar-Inch

Change of the sine angle must be count on sine bar inspection, the bar's tolerance within 0.005 mm / 100 mm



Unit:inch

ORDER NO.	LENGTH	WIDTH	HEIGHT	CENTER DISTANCE	PARALLEL	HARDEN	BLOCKS DIA.	MATERIAL	N.W. (kgs)	CODE NO.
V-S25	6-3/8"	1"	1-1/4"	127	0.00012"	HRC52°	3/4"	SK2	1	2004-020
V-S50	6-3/8"	2"	1-1/4"	127	0.00012"	HRC52°	3/4"	SK2	1.8	2004-021

### HOW TO CHOOSE THE BLOCK FOR SINE BAR

DISTANCE GAUGE BLOCK CAN GET DEGREE	SIN BAR CENTER	SIN BAR CENTER
	←50→	←100→
2°	1.7405	3.4899
3°	2.6168	5.2336
4°	3.4878	6.9756
5°	4.3578	8.7155
6°	5.2264	10.4528
7°	6.0935	12.1869
8°	6.9587	13.9173
9°	7.8217	15.6434
10°	8.6824	17.3648
11°	9.5404	19.0809
12°	10.3956	20.7911
13°	11.2476	22.4951
14°	12.0961	24.1921
15°	12.9401	25.8819
16°	13.7819	27.5637
17°	14.6186	29.2371
18°	15.4058	30.9017
19°	16.2784	32.5586
20°	17.1010	34.2020
21°	17.9184	35.8367
22°	18.7303	37.4606
23°	19.5366	39.0713
24°	20.3368	40.6736
25°	21.1309	42.2618
26°	21.9186	43.8371
27°	22.6995	45.3990
28°	23.4736	46.9471
29°	24.2405	48.4809
30°	25.0000	50.0000
31°	25.7519	51.5038
32°	26.4960	52.9919
33°	27.2320	54.4639
34°	27.9596	55.9192
35°	28.6788	57.3576
36°	29.3893	58.7785
37°	30.0908	60.1815
38°	30.7831	61.5661
39°	31.4660	62.9320
40°	32.1394	64.2787
41°	32.8030	65.6059
42°	33.4565	66.9130
43°	34.0999	68.1998
44°	34.7329	69.4658
45°	35.3553	70.7106

SINE BAR