

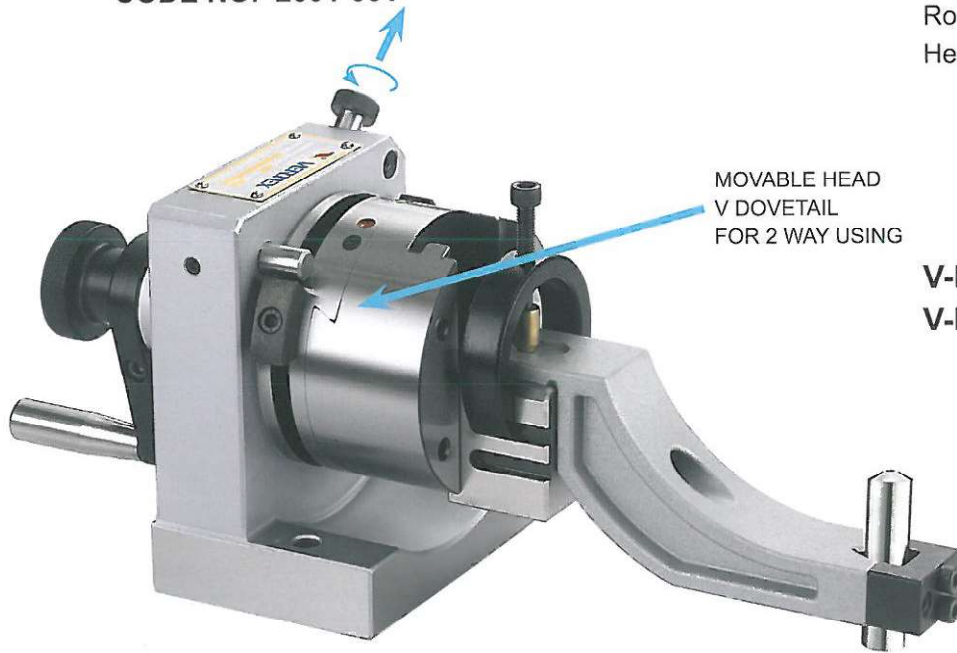


Punch Former



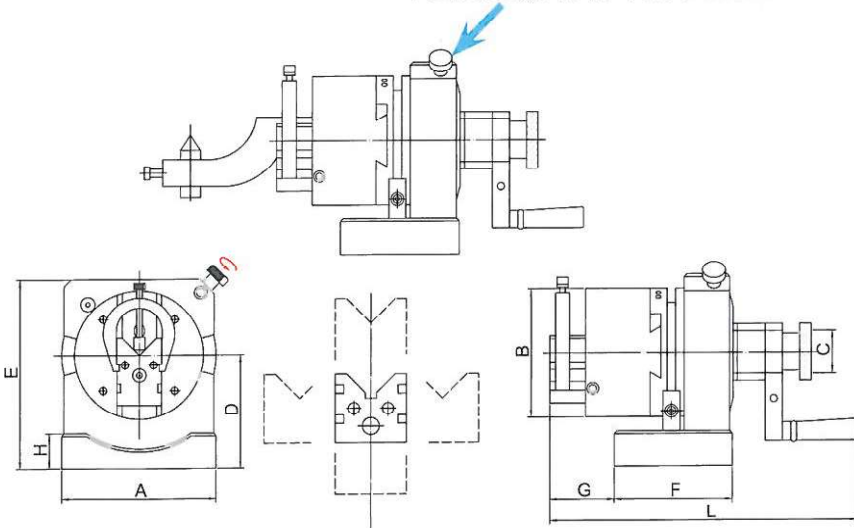
ORDER NO. V-PB
CODE NO. 2001-001

MAX. Wheel D. Ø200mm
Roller Center H. 80mm WEIGHT:10KGS
Head Slide Movement, 12.5mm



V-PB 2WAY
V-PS 1WAY, THROUGH HOLE

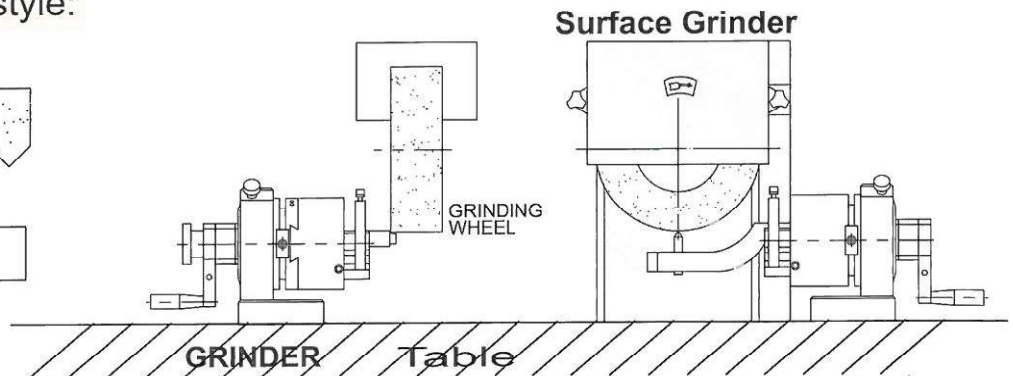
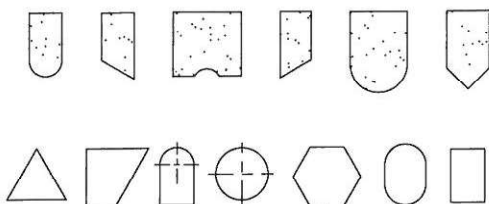
PULL & TURN TO 90° FOR SETTING



- Punch former is the fixture to grind the point of standard punches and E.D.M. electrodes for precise and fast operation.
- Besides the round, radius and multiangle punches, any special forms can be ground precisely .
By V-PB, punch/ grinding wheel can be ground either concave or convex radius shape.
- The capacity is from 4mm to 30mm.
- Punch Former is a great dressing instrument. Precisely forming the grinding wheel can be done by assembling an ARM with the main body. Any combination of tangents or radial form of the grinding wheel may be dressed accurately by easy operation.
- Max. diameter of grinding wheel within 200mm can be dressed accurately and safely. The height from base to roller's center is 80mm. Movement of each side can reach 12.5mm while aiming at the center of V block.
- The main body is made of one piece steel construction.

ORDER NO.	A	B	C	D	E	F	G	H	L	WEIGHT (kgs)	CODE NO.
V-PB	108	Ø90	Ø30	80-81	133	83	45	25	215	10	2001-001

Application grinding wheel style:





Punch Former

ORDER NO. V-PS
CODE NO. 2001-010



1 WAY Ø30 THROUGH HOLE

Specification

D(diameter)of the pressed part of the punch...4-30mm
L(length)of the pressed part of the punch...above22mm
Upper and lower movement span of V block.....25mm
Horizontal movement span of V block(one side)..12.5mm
(tow side)...25mm

Length of V block30mm
Height of the rotary central axis.....15mm
Cutting and dividing.....24 equal pieces(15")
Sand forming of the forming lever

(concave R).....100mmR
(convex R).....48mmR
Diamond sharpening knife : (small diameter)60x50(1/10carat)
(large diameter)100x50(1/4carat)

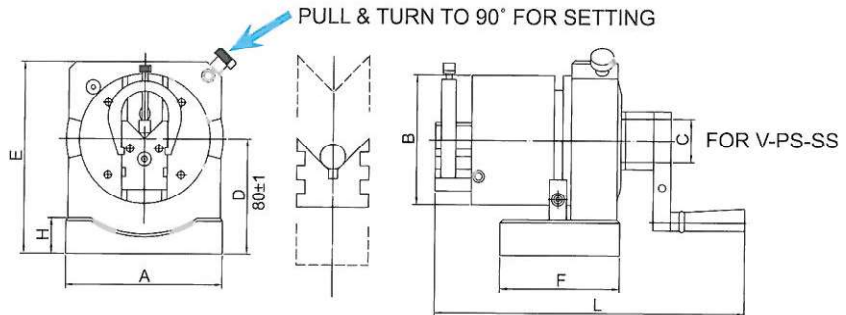
*Except for the handle and graduation scale all metal is special hard tool steel (SKS-2) heat treated at HRC 63

*V block can be disassembled for use separately.
V-PS the center through hole is ø30mm



PUNCH FORMER

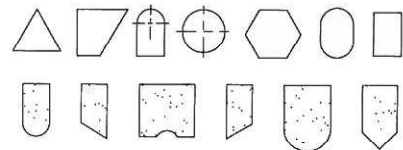
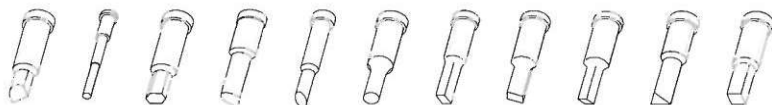
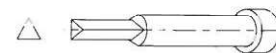
V-PS allows go through from the center of grip, to clamp a more longer punch ejector pin, it can go deep into of the grip position directly. To assemble an ARM with the main body, any combination of radial form of the grinding wheel may be dressed accurately by easy operation.



ORDER NO.	A	B	C	D	E	F	H	L	WEIGHT (kgs)	CODE NO.
V-PS	108	Ø90	Ø30	80-81	133	83	25	197	8.7	2001-010

Application grinding wheel style:

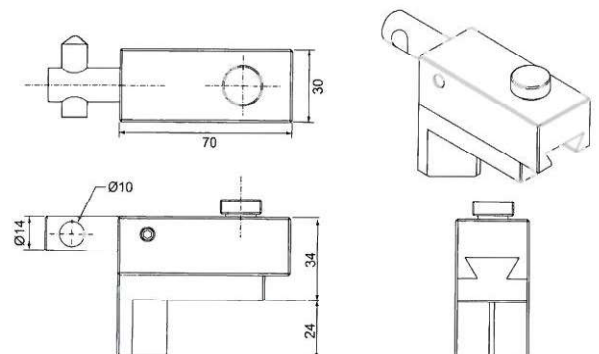
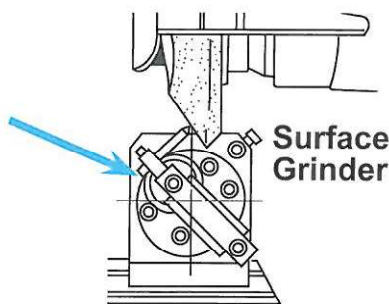
FOR INJECTOR PIN



Special Part Accessory For Angular Dressing

ORDER NO.V-PF
Without Diamond

CODE NO.2001-020
WEIGHT: 0.7KG

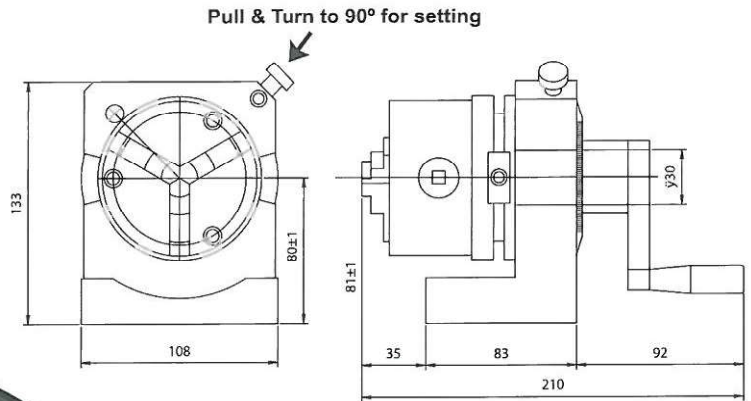
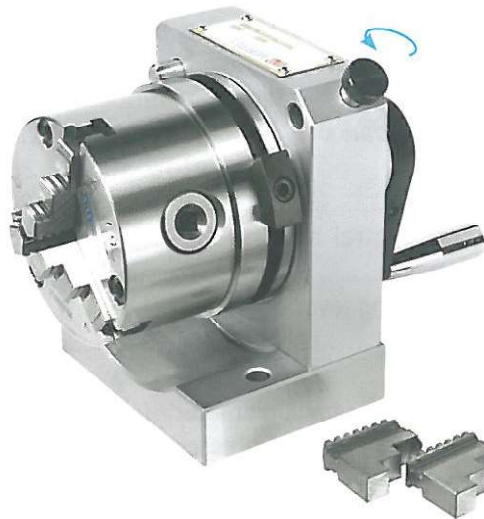


The Wheel angular dressing



3-Jaws Punch Former

ORDER NO.V-PS-80J CODE NO:2001-030



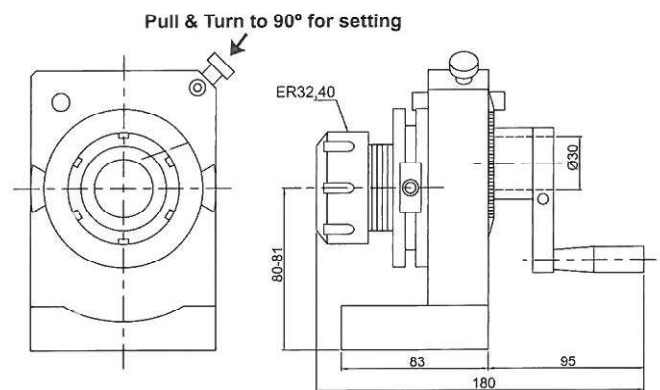
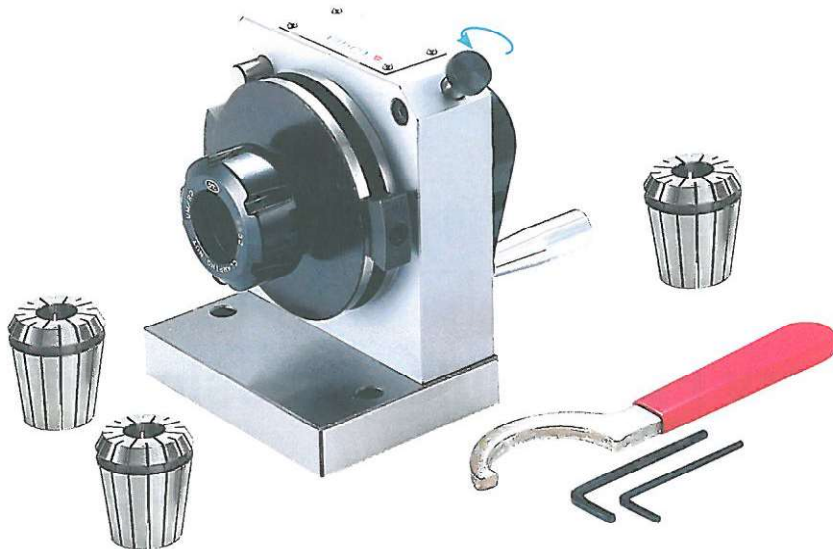
- VSC-3, 3 jaw chuck Clamping : $\varnothing 2-70$ mm
- The center of 3 jaws punch grinder can move gently to fix and to help the concentricity more precision.
- This punch grinder can divide into 24 angles, each angle is 15 degrees at 10 seconds accuracy, the weight is 8.7kgs.
- This style base can be selected to set up with sine plate to make sine angles. The sine plate also can be used with other Machines.
- The base can be adjusted for sine angle.
(ORDER NO.V-PS-80JS)



ER Collet Dividing Punch Former

ORDER NO.V-PS-ER32 CODE NO.2001-040

ORDER NO.V-PS-ER40 CODE NO.2001-041



- ER Collet Dividing Punch Grinder put ER32 main body and with collet inner size 6, 8, 10, 12, 16, 20mm, total 6pcs. the weight is 11kgs. ER40 with 7pcs.
- The center of collet can move gently to help the concentricity more precision.
- This punch grinder can divide into 24° angles, each angle is 15 degrees at ± 10 seconds accuracy.
- ER16 connection, special accessory (v-601 20-ER16-50L WITH 10PCS COLLET) can use ER16 base can select sine vise base which is good for sine angle use
(ORDER NO.V-PS-ER32S).



ER Collet Dividing Punch Grinder With Sine Plate



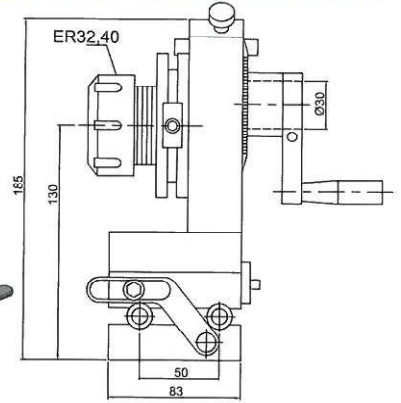
ORDER NO.V-PS-ER32S

CODE NO.2001-060

WEIGHT:11kgs



Example V-601
Special Acces.



Tilting Feature

- ER Collet Dividing Punch Grinder put ER32 main body and with collet inner size 6, 8, 10, 12, 16, 20mm, total 6pcs, the weight is 11kgs.
- The center of collet can move gently to help the concentricity more precision.
- This punch grinder can divide into 24° angles, each angle is 15 degrees at ±10 seconds accuracy.

Special accessory: ER16 connection, (V-601 20-ER16-50L WITH 10PCS COLLET) can use ER16 base can select sine vise base which is good for sine angle use (ORDER NO.V-PS-ER32S) please choose from page C16

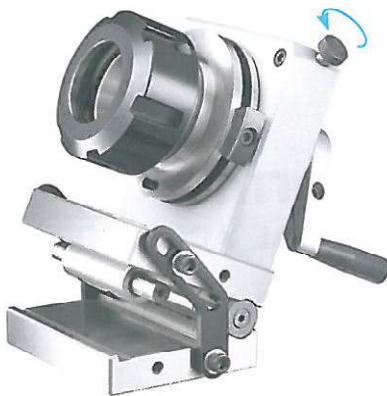


ER Collet Dividing Punch Grinder With Sine Plate

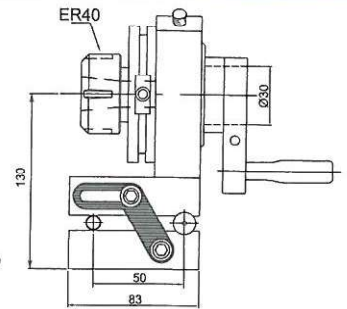
ORDER NO.V-PS-ER40S

CODE NO.2001-065

WEIGHT:10kgs



Example V-601
Special Acces.



Tilting Feature

- ER Collet Dividing Punch Grinder put main body and with collet inner. ER40 with 7pcs, Size 6,8,10,12,16,20,25 mm
- The center of collet can move gently to help the concentricity more precision.
- This punch grinder can divide into 24° angles, each angle is 15 degrees at ±10 seconds accuracy.

Special accessory: ER16 connection, (V-601 20-ER16-50L WITH 10PCS COLLET) can use ER16 base can select sine vise base which is good for sine angle use (ORDER NO.V-PS-ER32S) please choose from page C16

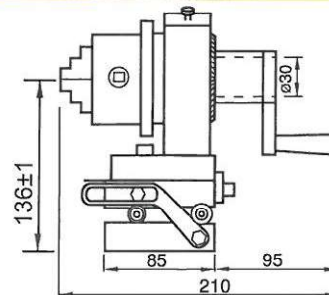


3-Jaws Punch Former With Sine Plate

ORDER NO.V-PS-80JS

CODE NO.2001-070

WEIGHT:11.7kgs



Tilting Feature

- The center of 3 jaws punch grinder can move gently to fix and to help the concentricity more precision.
- This punch grinder can divide into 24 angles, each angle is 15 degrees at 10 seconds accuracy, the weight is 8.7kgs.
- This style base can be selected to set up with sine plate to make sine angles. The sine plate also can be used with other Machines.
- The base can be adjusted for sine angle. (ORDER NO.V-PS-80JS)



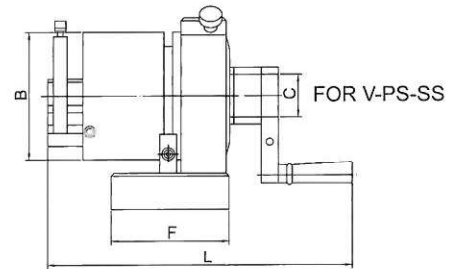
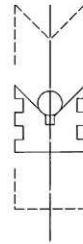
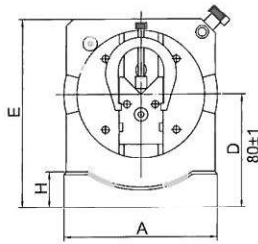
Punch Former With Sine Plate



NEW



V-PB & V-PS Type With Sine Plate
V-PB-BS 2 Way
V-PS-SS 1 Way Ø30 Through Hole
The Feature Is Show On Page B1,B2



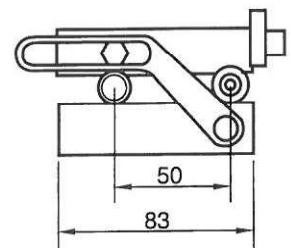
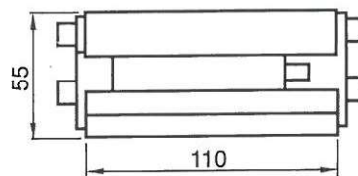
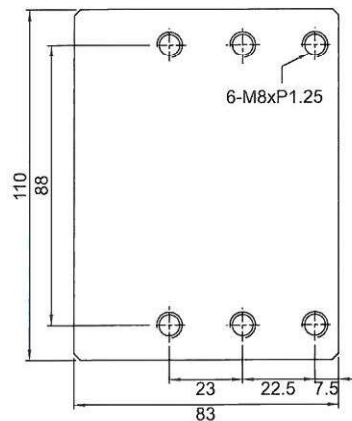
ORDER NO.	A	B	C	D	E	F	G	H	L	TOTAL HEIGHT	SINE BAR CENTER	N.W.	CODE NO.
V-PB-BS	108	Ø90	Ø30	80-81	133	83	45	25	215	136	50	13.6 kgs	2001-080
V-PS-SS	108	Ø90	Ø30	80-81	133	83		25	197	136	50	13.0 kgs	2001-081



Sine Plate For All Type Punch Former

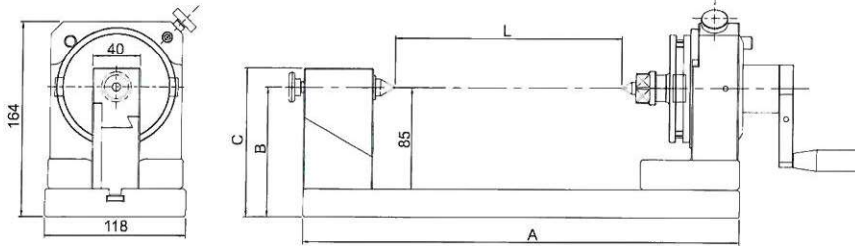
ORDER NO.V-PS-SP CODE NO.2001-050
WEIGHT:3.6kgs

OPTIONAL ACCESSORIES



IT'S FIT WITH VERTEX'S :
V-PB, V-PS, V-PS-ER-32,
V-PS-ER40, V-PS-80J

NEW



Feature

- For Checking Roundness & True Running Accuracy
- For Grinding High Accuracy Outer Diameter & Round Bar On Surface Grinder By Accurated Center And Holder.

Specification

- Body Center height : 85 mm
- Base to punch center : 109 mm
- Division & Accuracy : 24 & $15^{\circ} \pm 10''$
- Workpiece length : 0~450mm
- Material : sks3, HRC 60~62°
- Roundness : 0.002 mm
- Parallelism : 0.002 / 100mm
- Squareness : 0.002 / 100mm

Unit:mm

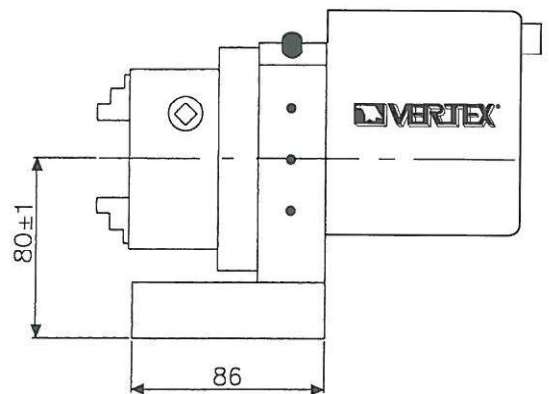
ORDER NO.	A	B	C	L	Divid Sion	Graduation	N.W. (kgs)	CODE NO.
VCI-150P	375	109	125	0-150	24 ($15^{\circ} \pm 10''$)	360°	20	2021-113
VCI-250P	475	109	125	0-250			23	2021-114
VCI-350P	575	109	125	0-350			26	2021-115

CONCENTRIC TEST STAND

Fixed Speed Punch Former

AUTO TYPE

NEW



- The Punch Former with a motor attached can be applied to precisely grind a punch to round in a short time and saves the processing time.
- Chuck Type can clamp workpieces in a wide range.
- 3 inch 3 jaw chuck.

ORDER NO.	O.D.	I.D.	Max. Dia. of Workpiece	Center Height	Motor Output-W Input-V	Graduation	R.P.M.	N.W. (kgs)	CODE NO.
V-PS-80M	2-70	24-64	Ø50	80-81	15W 110/220V	360°	110	11.72	2021-130