



Semi-Universal Dividing Head

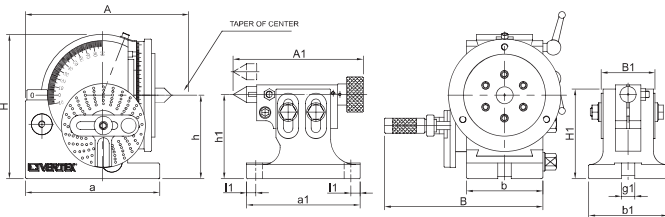


Standard Accessories

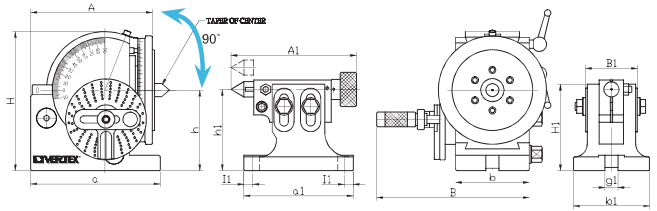


Dividing Plate A, B, C

Plate A	15	16	17	18	19	20
Plate B	21	23	27	29	31	33
Plate C	37	39	41	43	47	49



BS-0



BS-1

Semi-Universal Index No. 0 No. 1 (Head-stock):

Unit:mm

ORDER NO.	A	B	H	I	a	b	g	h	TAPER OF CENTER	SPINDLE THROUGH HOLE	CODE NO.
BS-0	177	188	173	13	160	91	16	100	MT-2	18	1001-050
BS-1	245	230	220	19	205	114	16	128	MT-3	20	1001-051

Semi-Universal Index B & S Type No. 0 No. 1 (Tail-Stock):

Unit:mm

ORDER NO.	A1	B1	H1	I1	a1	b1	h1	g1	N.W. (KG)
BS-0	155-180	64	107	11	134	94	80-108	16	4
BS-1	170-195	64	150	11	155	110	150-115	16	5.3

- Dividing Head can divide in any angle by the direct, indirect, or different methods. The ratio between the worm and the worm gear is 40:1.
- Hardened and ground spindle is rigidly held in a taper roller bearing. Worm is hardened and ground also.
- The swivel head can be locked of any angle from 10° below horizontal to 90° vertical-precision fitting to base assures smooth rotation.
- All models have threaded spindle nose and 24 hole dividing plate with easy conversion to fast direct indexing on numbers 2, 3, 4, 6, 8, 12, and 24.
- Easy indexing of all numbers from 2 to 50 and many numbers from 52 to 380. Model BS-2 is also equipped for different indexing of all numbers from 2 to 380, and for spiral cutting.
- Accurate precision, little backlash, fine appearance and strong structure so can assure smooth rotation.

THE CHUCK FIXING HOLE IS FROM FRONT.



BS-0-J-5 is BS-0 fitted with 5" 3-Jaw Chuck

OPTIONAL
The Chuck Fixing Hole Is From Front.
F. TYPE



BS-0T 1 1/2 - 8TPI TYPE

BS-0T 1 1/8 - 12TPI TYPE

BS-1T 1 1/2 - 8TPI TYPE

Call VERTEX to check old model's stock.

ORDER NO.	N.W. (kgs)	G.W. (kgs)	Meas. CFT	Applicable Chuck	CODE NO.
BS-0	19	(C)20	0.8	5" (Ø130mm)	1001-050
BS-1	32	(C)33	1.3	6" (Ø160mm)	1001-051
BS-0-J-5	24	(C)25	0.8	WITH 5" CHUCK	1001-053
BS-1-J-6	42	(C)45	1.3	WITH 6" CHUCK	1001-054



Universal Dividing Head



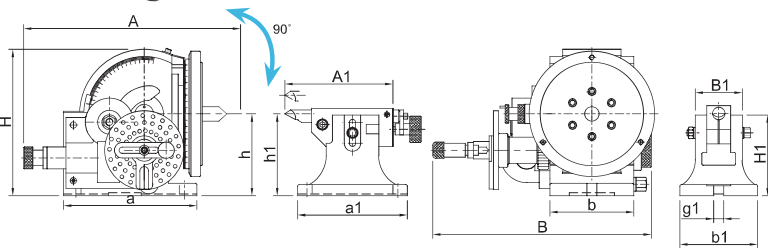
BS-2



Standard Accessories



DIVIDING HEAD



BS-2-J-8
THE CHUCK FIXING
HOLE IS FROM FRONT.



BS-2T TYPE

Thread Spindle: 2 1/4" - 8tpi
Call To Check Old Model's Stock.

Universal Index No.2 (Head-stock):

Unit:mm

ORDER NO.	A	B	H	I	a	b	g	h	Taper of center	SPINDLE THROUGH HOLE	CODE NO.	ORDER NO.	WITH CHUCK	WEIGHT (kgs)	CODE NO.
BS-2	359	340	235	20	212	135	16	134	MT-4	25	1001-052	BS-2		65	1001-052
BS-2A	285	202	237	20	213	134	16	134	MT-4	25	1001-057	BS-2-J-6	6"	78.5	1001-055
												BS-2-J-8	8"	80	1001-056
												BS-2A		47.5	1001-057
												BS-2A-J-6	6"	57	1001-058
												BS-2A-J-8	8"	63	1001-059

BS-2 (Tail-stock)

Unit:mm

ORDER NO.	A1	B1	H1	I1	a1	b1	h1	g1	N.W. (KG)	ORDER NO.	Gross Weight kg	Meas. CFT	Applicable Chuck
BS-2	135-175	75	130	15	175	125	120-145	16	10	BS-2	(C)65	3.4	6" OR 8" F TYPE
BS-2A	218	74	139	15	175	124	134	16	10	BS-2A	(C)47.5	1.24	6" OR 8" F TYPE



Universal Dividing Head BS-2A



BS-2A

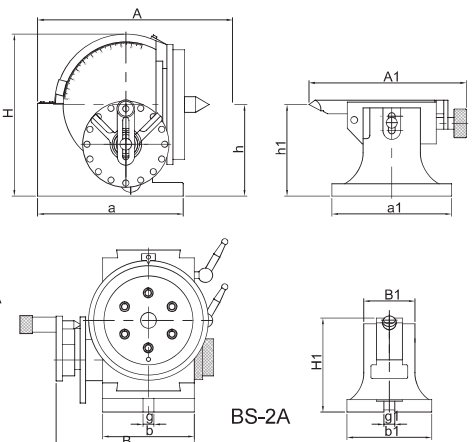
Standard Accessories

BS-2A

UNIVERSAL DIVIDING HEAD W/O CHANGE GEAR TYPE



BS-2A COMES WITH A TAIL STOCK, A SET OF DIVIDING PLATE, A SET OF CARRIER CLAMP, A 3 JAW PLATE, A CENTER
BS-2A BODY STRUCTURE IS SAME AS BS-2 WITHOUT CHANGING GEAR ARBOR OR BRACKET. OTHER ACCESSORIES ARE SAME AS BS-2.

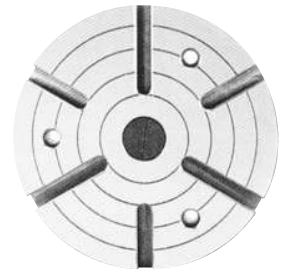




Standard Accessories



Masking Plate



Face Plate

Optional Accessories

The same as Rotary table
Please see page A3

TS-2 for CS-6
TS-3 for CS-8



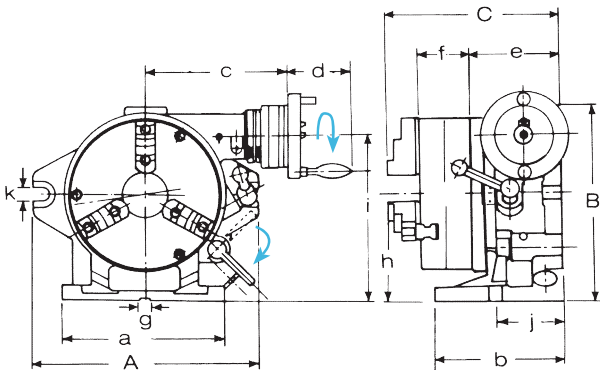
DP-4



CS-8 with VSK-8A 3-JAW CHUCK MASKING PLATE & FACE PLATE

This product combines the advantages of the Super Index with those of a worm-gear index. When mounted on a milling, boring or other machine tool it can carry out single-purpose indexing and indirect indexing using the worm-drive mechanism. Disengaging the worm drive the 24-notch master plate permits 2, 3, 4, 6, 8, 12 and 24 dividing in the same manner as the Simple Index. When the chuck is removed, the unit can be used as a horizontal and vertical type rotary table. The operating handle to rotary table worm gear reduction ratio is 1:90. The operating handle collar is graduated in one minute, and readings down to ten seconds can be set on the vernier.

- Super spacer index include 3 jaw chuck, 10"/250mm face plate, masking plates 2, 3, 4, 6, 8, 12.



The state of CS-8 fitted with Face Plate & Dividing Plate

Specifications

Unit:mm

ORDER NO.	Numbers of dividing	Chuck Through Hole				Face plate		A	B	C	a
		Outer diameter	Inner jaw	Outer jaw	Inner dia	Outer dia	Thickness				
CS-6	2, 3, 4, 6 8, 12, 24	167 VSK-6A	4~42	10~156	44	203	50	250	235	221	220
CS-8		210 VSK-8A	4~62	10~180	63	254	58	310	285	243	225

Unit:mm

ORDER NO.	b	c	d	e	f	g	h	i	j	k	Gross Weight kgs	Meas. CFT	CODE NO.
CS-6	150	184	82	112	66	16	123	186	80	18	(W)44.5	1.2	1001-060
CS-8	160	201	82	125	75	16	155	232	90	18	(W)71.5	3.1	1001-061

(W)Wooden Case (C)Carton Case